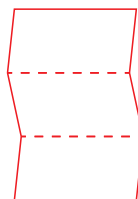


128g 铜版纸 双面彩色印刷

成品尺寸: 100*150mm 上下风琴折

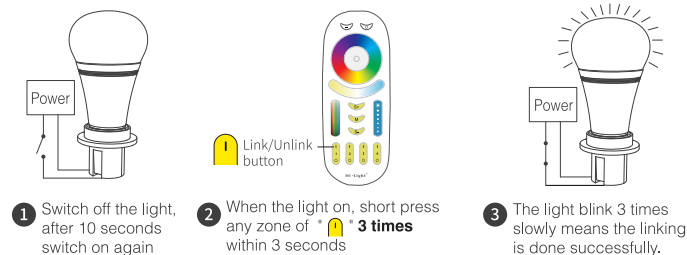


折最上面



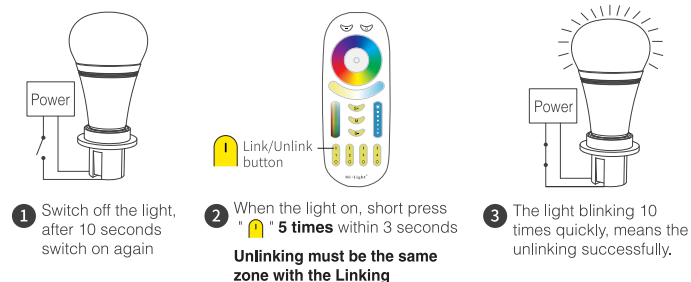
The light can be working after linking with the remote controller.

Linking Instructions



! If the light not blink slowly, the linking failed, Pls switch off the light again, and follow the above steps again.

Unlinking Instructions



! If the light not blink quickly, the unlink failed, pls switch off the light again, and follow the above steps to unlink again.

Mi·Light®

4-Zone RGB+CCT Remote Controller (FUT092) User Instruction

Features

This product adopt world-wide used 2.4GHz frequency, GFSK control method, with the features of low power consumption, long distance transmitting, strong anti-interference and fast communication rate; can control specified Mi-Light smart light with color, color temperature, saturation and brightness changing.

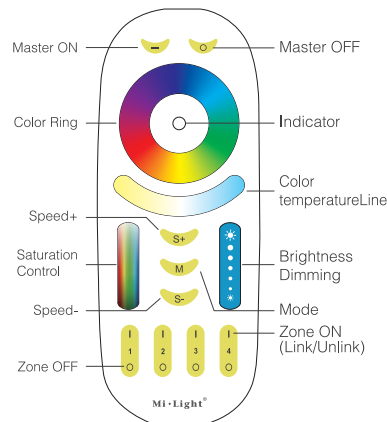
Parameters

Model No.: FUT092
Voltage: 3V(2*AAA battery)
Power Consumption: 6dBm
Standby Power Consumption: 20uA

Transmission Frequency: 2.4GHz
Modulation Method: GFSK
Control Distance: 30m
Size: 138mm*56mm*20mm

Instruction

1. Long press "Master OFF" or "Zone OFF" to night light mode.
2. Touch "Color temperature line" to white light mode and adjust color temperature.
3. Touch "Color Ring" to change the colors.
4. Press "Speed+" to accelerate the dynamic mode speed continuously until to fastest speed.
5. Press "Speed-" to lower the dynamic mode speed continuously until to lowest speed.



Caution

1. Remote controller only control specified Mi-Light products; not all Mi-Light series can work on this remote controller.
2. In the using of the remote, if the indicated lamp blinking quickly, pls change the battery in time.
Pls don't use poor quality battery to avoid the leaking of battery liquid to damage the remote controller.
3. Pls don't use the remote controller on the wide-range metal or strong electromagnetic wave area, otherwise, it will badly affect the controlling distance.

Made in China

